



DURABLE ACOUSTICAL COMFORT



DURABLE, ACOUSTICAL, AND COMFORTABLE UNDERLAYMENT

NO.2025-01

DURACUSHION™

UP TO IIC 86

QUICK AND EASY TO INSTALL

DOUBLE GLUE-INSTALLATION PROCEDURE



INSTALLATION VIDEO

- ① **DURACUSHION** should be laid black side down.
- ② Align **DURACUSHION** seams perpendicular to carpet seams. If not possible, keep a minimum distance of 6" from carpet seams. Consider dry laying the carpet at this stage.
- ③ Apply quality multi-purpose adhesive with the correct trowel*, spread evenly over the floor surface according to adhesive manufacturer's instructions.
- ④ After indicated adhesive open time, place **DURACUSHION** black side onto the adhesive, align seams tightly and apply light pressure on the cushion with a roller to ensure contact with adhesive.
- ⑤ Trim excess **DURACUSHION** at perimeter of the room.
- ⑥ Spread premium multi-purpose adhesive on **DURACUSHION** surface with a trowel*, following adhesive manufacturer's directions. After indicated adhesive set time, position carpet on adhesive-covered **DURACUSHION**.
- ⑦ Follow manufacturer's instructions when preparing and installing carpet, with special attention to seams and rolling the final installation.
- ⑧ Let adhesive set before exposing installation to foot traffic.

Caution:

Using poor quality adhesive, incorrect type, or improper application method can cause installation issues. Please contact Dura Undercushions for the installation of **DURACUSHION** underneath an area rug or stair runner.

* When following the double glue-installation procedure, consider using a 1/8" x 1/8" x 1/8" U-notch trowel for even adhesive coverage.



STRETCH-IN INSTALLATION PROCEDURE

- | | | | | | |
|--|--|--|---|--|---|
| <p>①</p> <p>Measure the length and width of the room and cut DURACUSHION to size, leaving a 1/2" gap around the perimeter of the room.</p> | <p>②</p> <p>DURACUSHION should be laid black side down. Ensure that it covers the entire area of the room.</p> | <p>③</p> <p>Use double-sided carpet tape to secure the edges of DURACUSHION to the floor along the perimeter of the room, leaving a 1/2" gap around the edges.</p> | <p>④</p> <p>Install tack strips around the perimeter of the room, making sure to leave a 1/4" gap between the strip and the wall.</p> | <p>⑤</p> <p>Stretch the carpet over DURACUSHION and tuck the carpet into the gap between the tack strip and the wall using a knee kicker or power stretcher.</p> | <p>⑥</p> <p>Use a carpet knife to trim any excess carpet along the edges of the room.</p> |
|--|--|--|---|--|---|

WARRANTY

Dura underlayments are warranted to retain their essential firmness, resilience, and porosity through the useful life of the floor covering under which they are installed. This warranty applies to all types of indoor installations. In the event of a confirmed product failure due to defective manufacture the company will replace, without charge, the defective portion of the underlayment with new equivalent product.

This warranty is valid only when the product is used in accordance with our instructions and for its intended purpose and does not cover defects or failures due to inappropriate use or abuse.



Find us in
MasterSpec®
Powered by Deltek Specpoint®



DISCOVER MORE

DURABLE ACOUSTICAL COMFORT



For Engineered Hardwood and Laminated Flooring

YOU NEED:
DURA-SON
DURA-SON MB

MULTI-RESILIENT LAYER FLOORING

YOU NEED:
DURACOUSTIC



For Carpet & Carpet Tile

YOU NEED:
DURACUSHION (Carpet)
SUPERDURA (Carpet)
PROTECTOR (Carpet)
DURALUX (Carpet)

DURAPAD (Carpet Tile)
DURAQUIET (Carpet Tile)

MULTI-RESILIENT LAYER FLOORING

YOU NEED:
DURACOUSTIC

The durability of our products are the solution to all your acoustical needs. They will outlast and maintain their acoustical and comfort qualities throughout their lifetime.

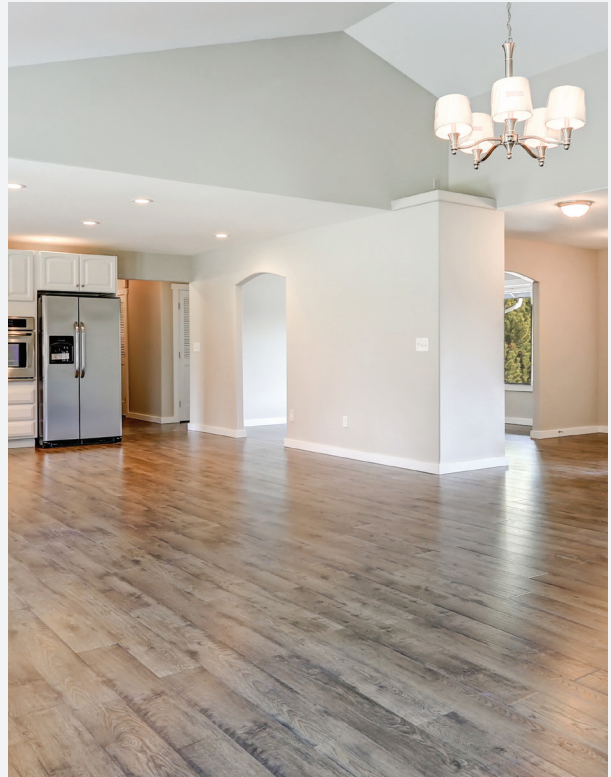


For Ceramics

YOU NEED:
DURAQUIET

MULTI-RESILIENT LAYER FLOORING

YOU NEED:
DURACOUSTIC



For Vinyl

YOU NEED:
DURAPAD (LVT/LVP)
DURAQUIET (LVT/LVP/Sheet Vinyl)

MULTI-RESILIENT LAYER FLOORING

YOU NEED:
DURACOUSTIC



DURABLE ACOUSTICAL COMFORT

**8525 CHEMIN DELMEADE, MONTREAL
QC H4T 1M1**

1-800-295-4126

INFO@DURAUNDERCUSHIONS.COM

WWW.DURACUSHION.COM

