

DURA



DURABLE, ACOUSTICAL, AND COMFORTABLE UNDERLAYMENT

NO.2023-01

DURA-SON MB

QUICK AND EASY TO INSTALL

STEPS

①

Make sure the subfloor is clean, dry and flat. Level any imperfections.

②

DURA-SON MB is to be installed **ONLY** under floating floors, loose laid and not glued to the subfloor. Always install black side down.

③

DURA-SON MB may be installed parallel or perpendicular to flooring.

④

DURA-SON MB seams must be placed tightly together and joined with a 2" vapor barrier tape.

⑤

Always follow the flooring manufacturer's specifications.



Dura-Son MB is not suitable for:

- Parquet wood tile floor
- Solid hardwood floor
- Ceramic, vinyl tile or vinyl sheet

Contact us directly if you plan an installation under ceramic, parquet wood tile floor, vinyl tile or vinyl sheet.

DISCOVER MORE

DURABLE ACOUSTICAL COMFORT



For Engineered Hardwood and Laminated Flooring

YOU NEED:
DURA-SON
DURA-SON MB

MULTI-RESILIENT LAYER FLOORING

YOU NEED:
DURACOUSTIC



For Carpets

YOU NEED:
DURACUSHION
SUPERDURA
PROTECTOR
DURALUX

MULTI-RESILIENT LAYER FLOORING

YOU NEED:
DURACOUSTIC

The durability of our products are the solution to all your acoustical needs. They will outlast and maintain their acoustical and comfort qualities throughout their lifetime.

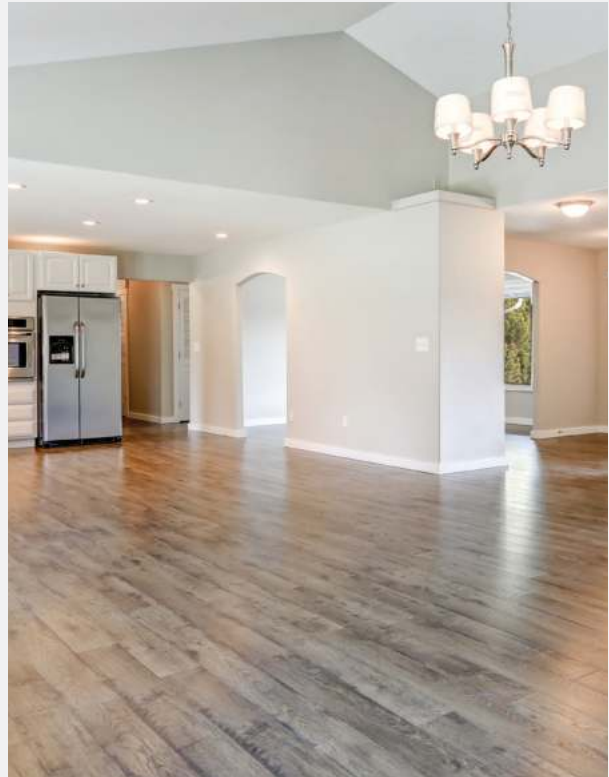


For Ceramics

YOU NEED:
DURAQUIET

MULTI-RESILIENT LAYER FLOORING

YOU NEED:
DURACOUSTIC



For Vinyl

YOU NEED:
DURAQUIET

MULTI-RESILIENT LAYER FLOORING

YOU NEED:
DURACOUSTIC



**8525 CHEMIN DELMEADE, MONTREAL
QC H4T 1M1**

1-800-295-4126

INFO@DURAUNDERCUSHIONS.COM

WWW.DURACUSHION.COM

