



DURABLE ACOUSTICAL COMFORT



---

DURABLE, ACOUSTICAL, AND COMFORTABLE UNDERLAYMENT

NO.2024-07

---

**DURA-SON MB™**

---

# WE'VE BEEN REVOLUTIONIZING FLOOR ACOUSTICS SINCE 1957

---

## DURA-SON MB

---

### RESIDENTIAL & COMMERCIAL USE

Dura has a clear goal: produce the highest performing underlay and carpet cushion products while contributing to the preservation of our environment for generations to come. Through our unique process of giving a second life to used rubber, we've achieved our lofty goal by creating products that absorb sound like no other and lasts for years.

Our Dura-Son MB underlayment features a moisture barrier that provides additional protection against water damage and extends the life of your flooring. We offer comfort and luxury that only a soundproof space can offer. Ideal for floating engineered hardwood and laminate flooring systems in areas where moisture accumulates, such as basements, bathrooms, kitchens, and laundry rooms. Dura-Son MB is perfectly adapted to the standards of the residential and commercial sector and is guaranteed for life.

# HIGH-PERFORMANCE UNDERLAYMENT



ENGINEERED  
HARDWOOD  
AND LAMINATE



CERAMIC



VINYL



CARPET



✓ **THE BEST ACOUSTICAL UNDERLAYMENT IN ITS CATEGORY**

✓ **MOISTURE BARRIER FOR ADDITIONAL PROTECTION**

✓ **LASTS A LIFETIME**

✓ **MADE FROM RECYCLED RUBBER**

✓ **RETAINS ITS SOUNDPROOFING QUALITIES**

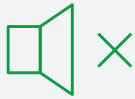


---

# WHAT MAKES DURA-SON MB THE NEW STANDARD

---

**GREATLY REDUCES  
IMPACT SOUND**



---

**PROVIDES UNDERFOOT  
COMFORT & DOES NOT  
COLLAPSE OVER TIME**



---

**GUARANTEED TO WORK OVER  
RADIANT HEATED FLOORS**



---

**RESISTS MOLD, MILDEW,  
AND FUNGUS GROWTH**



---

**EASY TO INSTALL**



---

**CONTRIBUTES TO  
LEED CREDITS**



---

**GREEN LABEL  
PLUS+ CERTIFIED**



---

**MADE FROM  
RECYCLED RUBBER**



---

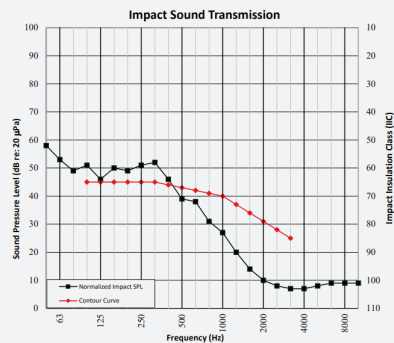
**EQUIPPED WITH  
AN EXCELLENT  
MOISTURE BARRIER**



# ACOUSTICAL TESTING

PERFORMED BY:  
**INTERTEK**

## ASTM E90 + ASTM E492

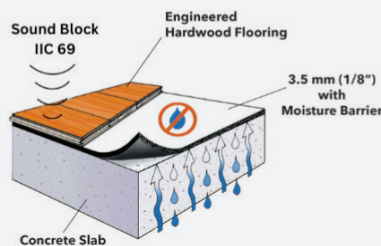


14 mm Engineered Hardwood  
Dura-Son MB 3.5 mm (1/8") IIC\*69

Reinforced Concrete Slab  
200 mm (8") Bare Slab IIC\*36

## Approved and tested by experts

Dura-Son MB 3.5 mm was tested in a bedroom under a 14 mm engineered hardwood floor over a 8" concrete slab. Dura-Son MB 3.5 mm (1/8") obtained an IIC 69. IIC is a measure of impact sound transmission from one floor to another. The standard IIC recommendation is 55 with a hardwood flooring. The higher the IIC rating, the better quality of sound absorption.



## Dura-Son MB Specifications

The sound rated floor material shall be an open cellular rubber reinforced with solid rubber particles bonded to fiberglass backing, 3.5 mm (1/8") thick, approximately 40 oz/yd<sup>2</sup> in weight, and 22 lb/ft<sup>3</sup> in density. The product improves moisture protection with a 3 mil. barrier and a water vapor transmission rate of .0009 g/hour/square foot or 0.010 g/hour/m<sup>2</sup>. (ASTM E96). The product shall have an IIC rating of 69 (tested as per ASTM E90 + ASTM E492) based on the construction detailed in this brochure. The acoustical material shall be DURA-SON MB 3.5 mm (1/8") manufactured by: Dura Undercushions Ltd.

We invite you to contact us  
for any inquiries via email:  
**[info@duraundercushions.com](mailto:info@duraundercushions.com)**  
or via phone:  
**1-800-295-4126**

# IMPERIAL MATERIAL SPECIFICATIONS

<b>Thickness</b>	0.137 in
<b>“R” Value</b>	0.32
<b>Mass</b>	40 oz / sq. yd
<b>Density</b>	22 lb / cu. ft
<b>Tensile</b>	24 lb / in
<b>Content</b>	Minimum 95% recycled rubber
<b>Roll Size</b>	24 sq. yd
<b>Roll Weight</b>	60 lb
<b>Roll Width</b>	54 in.
<b>Roll Length</b>	48 ft.
<b>Roll Diameter</b>	10 in.
<b>Coverage</b>	216 sq. ft
<b>Acoustic Value</b>	IIC 69 / ASTM E90 and E492 - Impact Sound Transmission
<b>Moisture Protection</b>	3 mil Polyethylene
<b>Water Vapor Transmission Rate</b>	0.0009g / hr. / sq.ft. Or 0.010g / hr. / sq.m. / ASTM E96
<b>Green Quality</b>	CRI Green Label Plus approved
<b>Anti-Microbial</b>	Naturally resists mold, mildew and fungus growth
<b>Radiant Heated Floors</b>	Suitable for radiant heated floor
<b>LEED</b>	Contributes up to 6 credits
<b>Flammability</b>	PASS Pill Test / ASTM D2859
<b>Warranty</b>	Lifetime*

# METRIC MATERIAL SPECIFICATIONS

Thickness	3.48 mm
"R" Value	0.32
Mass	1.36 kg / sq. m
Density	352.41 kg / cu. m
Tensile	214 N / 5 cm
Content	Minimum 95% recycled rubber
Roll Size	20.01 sq. m
Roll Weight	27.22 kg
Roll Width	1.37 m
Roll Length	14.63 m
Roll Diameter	25.4 cm
Coverage	20.01 sq. m
Acoustic Value	IIC 69 / ASTM E90 and E492 - Impact Sound Transmission
Moisture Protection	3 mil Polyethylene
Water Vapor Transmission Rate	0.0009g / hr. / sq.ft. Or 0.010g / hr. / sq.m. / ASTM E96
Green Quality	CRI Green Label Plus approved
Anti-Microbial	Naturally resists mold, mildew and fungus growth
Radiant Heated Floors	Suitable for radiant heated floor
LEED	Contributes up to 6 credits
Flammability	PASS Pill Test / ASTM D2859
Warranty	Lifetime*

# QUICK AND EASY TO INSTALL

## STEPS

1

Make sure the subfloor is clean, dry and flat. Level any imperfections.

2

DURA-SON MB is to be installed **ONLY** under floating floors, loose laid and not glued to the subfloor. Always install black side down.

3

DURA-SON MB may be installed parallel or perpendicular to flooring.

4

DURA-SON MB seams must be placed tightly together and joined with a 2" vapor barrier tape.

5

Always follow the flooring manufacturer's specifications.



### Dura-Son MB is not suitable for:

- Parquet wood tile floor
- Solid hardwood floor
- Ceramic, vinyl tile or vinyl sheet

Contact us directly if you plan an installation under ceramic, parquet wood tile floor, vinyl tile or vinyl sheet.



---

# WARRANTY

Dura underlayments are warranted to retain their essential firmness, resilience, and porosity through the useful life of the floor covering under which they are installed. This warranty applies to all types of indoor installations. In the event of a confirmed product failure due to a manufacturing defect, we will replace the defective section of the underlayment with a new equivalent product, free of charge.

This warranty applies only if the product is used in accordance with our instructions and for its intended purpose. It does not cover defects or failures due to improper use or misuse.



# DISCOVER MORE

---

## DURABLE ACOUSTICAL COMFORT



---

### For Engineered Hardwood and Laminated Flooring

**YOU NEED:**  
DURA-SON  
DURA-SON MB

---

### MULTI-RESILIENT LAYER FLOORING

**YOU NEED:**  
DURACOUSTIC



---

### For Carpets

**YOU NEED:**  
DURACUSHION  
SUPERDURA  
PROTECTOR  
DURALUX

---

### MULTI-RESILIENT LAYER FLOORING

**YOU NEED:**  
DURACOUSTIC

The durability of our products are the solution to all your acoustical needs. They will outlast and maintain their acoustical and comfort qualities throughout their lifetime.



---

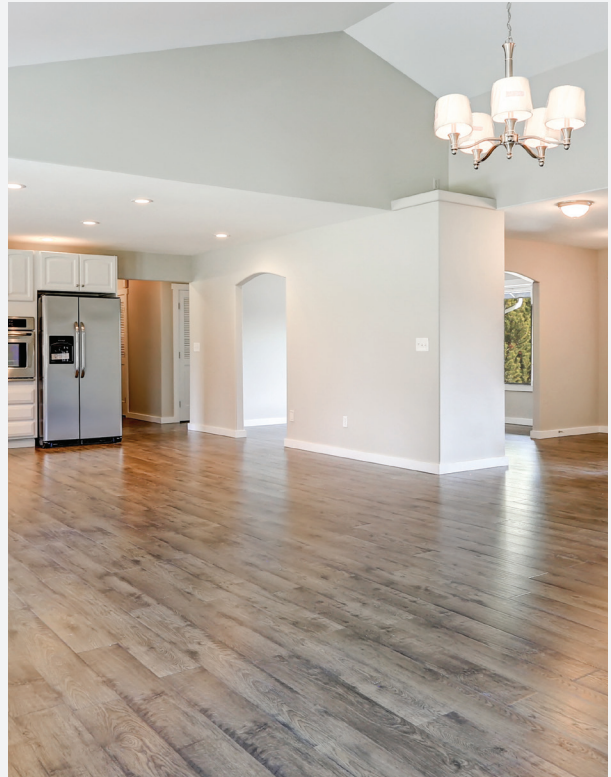
## For Ceramics

**YOU NEED:**  
**DURAQUIET**

---

## MULTI-RESILIENT LAYER FLOORING

**YOU NEED:**  
**DURACOUSTIC**



---

## For Vinyl

**YOU NEED:**  
**DURAQUIET**

---

## MULTI-RESILIENT LAYER FLOORING

**YOU NEED:**  
**DURACOUSTIC**





DURABLE ACOUSTICAL COMFORT

---

**8525 CHEMIN DELMEADE, MONTREAL  
QC H4T 1M1**

---

**1-800-295-4126**

---

**INFO@DURAUNDERCUSHIONS.COM**

---

**[WWW.DURACUSHION.COM](http://WWW.DURACUSHION.COM)**

